



Best Practices for Water Management

On-The-Fly Water Treatment

CAT-6 Chemical Additive Units

Reliable

- ◇ Self-contained
 - ◆ Diesel-electric
 - ◆ In-unit operation with lab
- ◇ Backup
 - ◆ Power generation
 - ◆ Chemical pumps & meters

Monitoring & reporting

- ◇ Real-time data acquisition
- ◇ On-site lab monitoring
 - ◆ ORP, FAC, pH
 - ◆ Bacterial enumeration
- ◇ Daily reporting
 - ◆ Injection rates
 - ◆ Stage summary
 - ◆ Chemical inventory

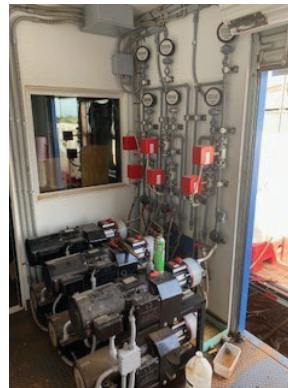
Multiple chemical options

- ◇ Biocides
 - ◆ Oxidizing & non-oxidizing
- ◇ Scale inhibitors
- ◇ Defoamers

Controlling bacteria in source waters and transmission systems is important to promoting worker safety and preserving asset value. Flex-Chem's CAT-6 Chemical Additive Units provide reliable biocide injection performance during conventional fracturing or slick-water completions.

Flex-Chem has a complete line of oxidizing and non-oxidizing EPA registered biocides/preservatives.

Flex-Chem's proven intelligent control and data acquisition system assures accurate and dependable biocide injection performance throughout the job.



Flex-Chem Corporation

Mid-Continent Operations

Corporate Office

700 N Wilson Rd,
PO Box 1647
Weatherford, OK 73096

Phone: 580-772-2386
Email: sales@flex-chem.com
www.flex-chem.com

Mid-Continent Sales
16320 Sonoma Park Dr
Edmond, OK 73013

Permian Basin Operations
6594 State Highway 17
Pecos, TX 79772

Unit specifications:

CAT-6 Chemical Additive Unit

Chassis:	Intermodal Container	Chemical Pumps:	6
Power:	Onboard Generators	Maximum Pump Rate:	6 X 8.8 gpm
-	30 kW x 2 (100% backup)	Maximum Pump Pressure:	250 psi
Pump Drive:	Electric VFD	Water Transfer Connection:	Check Valve
Flow Meters:	6 Electromagnetic	Chemical Mixing In Line:	Static Mixer